

19-12-14 AN

Reg. No.

--	--	--	--	--	--	--	--	--	--	--	--	--	--	--	--	--	--	--	--

Question Paper Code : 97095

B.E./B.Tech. DEGREE EXAMINATION, NOVEMBER/DECEMBER 2014.

Second Semester

Civil Engineering

HS 6251 – TECHNICAL ENGLISH II

(Common to all Branches except Marine Engineering)

(Regulation 2013)

Time : Three hours

Maximum : 100 marks

Answer ALL questions.

PART A — (10 × 2 = 20 marks)

1. Complete the following conditional sentences: (2 × 1 = 2)
 - (a) She would have got the first prize if she _____.
 - (b) If he takes fast food daily, he _____.
2. Choose the correct meaning of the idiom from the four options: (2 × 1 = 2)
 - (a) He used his friends to help him get into the civil service **by back door**.
 - (i) using physical force
 - (ii) in an unfair way
 - (iii) non-violence means
 - (iv) using leadership skills
 - (b) Workers were kept **in the dark** about the plans to sell the company.
 - (i) not giving food
 - (ii) keeping them in the dark room
 - (iii) not permitting them to go out
 - (iv) do not know about the plan
3. Fill in the blanks with the appropriate collocation from the given options: (2 × 1 = 2)
 - (a) We need to take some _____ (decisive / latest / casual) action before it is too late.
 - (b) We are fighting for the _____ (outright / wholehearted / chronic) abolition of the death penalty.

4. Rewrite the following in their passive form: $(1 \times 2 = 2)$
 People use mobile phones extensively for business purposes and social relationships. Now teachers use them for teaching English to the students.
5. Make sentences expressing purpose using the given hints: $(4 \times \frac{1}{2} = 2)$
 Example: Periscope: views objects above the sea level
 Answer: Periscope is used to view objects above sea level.
 (a) Transmitter: transmits radio or television signals
 (b) Lactometer: measures the relative density of milk to determine purity
 (c) Inverter: converts direct current into alternating current
 (d) Mouse: controls the movement of the cursor and selects the functions on a computer display
6. Rewrite the following as numerical expressions: $(4 \times \frac{1}{2} = 2)$
 (a) A committee consisting of 6 members
 (b) A petrol tank with a capacity of 5 litres
 (c) An apartment with 3 bedrooms
 (d) A course with the duration of five days
7. Combine the two sentences into one sentence using the given connective: $(4 \times \frac{1}{2} = 2)$
 (a) David who is studying in an engineering college is good at baseball. David does not like to play baseball. (but)
 (b) I could not find my costly shoes. I searched all the rooms in my house. (yet)
 (c) She was extremely tired after a lot of work in the office. She could not sleep. (even though)
 (d) They were eating burgers. We saw them at lunchtime. (when)
8. Fill in the blanks with a suitable modal verb from the given options: $(4 \times \frac{1}{2} = 2)$
 (a) Drivers _____ (could/must/may) stop when the traffic lights are red.
 (b) You _____ (shouldn't/needn't/may not) leave small objects lying around. Such objects _____ (must/may/mustn't) be swallowed by children.
 (c) Don't forget to take an umbrella since it is cloudy. It _____ (need/should/might) rain later.
9. Choose any one word from the following and write two sentences using the same word, one in noun form and the other in verb form: $(1 \times 2 = 2)$
 (a) benefit (b) guide
 (c) request
10. Make sentences using any two of the following phrasal verbs: $(2 \times 1 = 2)$
 (a) fall down (b) find out
 (c) look into (d) turn down

PART B — (5 × 16 = 80 marks)

11. Attempt both subdivisions (a) and (b).

(a) Read the passage and answer the following questions:

It was once believed that being overweight was healthy, but nowadays few people subscribe to this viewpoint. While many people are fighting the battle to reduce weight, studies are being conducted concerning the appetite and how it is controlled by both emotional and biochemical factors. Some of the conclusions of these studies may give insights into how to deal with weight problems. For example, when several hundred people were asked about their eating habits in times of stress, 44 percent said they reacted to stressful situations by eating. Further investigations with both humans and animals indicated that it is not food which relieves tension but rather the act of chewing.

A test in which subjects were blindfolded showed that obese people have a keener sense of taste and crave more flavorful food than nonobese people. When deprived of the variety and intensity of tastes, obese people are not satisfied and consequently eat more to fulfill this need. Blood samples taken from people after they were shown a picture of food revealed that overweight people reacted with an increase in blood insulin, a chemical associated with appetite. This did not happen with average-weight people.

In another experiment, results showed that certain people have a specific, biologically induced hunger for carbohydrates. Eating carbohydrates raises the level of serotonin, a neurotransmitter in the brain. Enough serotonin produces a sense of satiation, and hunger for carbohydrates subsides.

Exercise has been recommended as an important part of a weight-loss program. However, it has been found that mild exercise, such as using stairs instead of the elevator, is better in the long run than taking on a strenuous program, such as jogging, which many people find difficult to continue over periods of time and which also increases appetite.

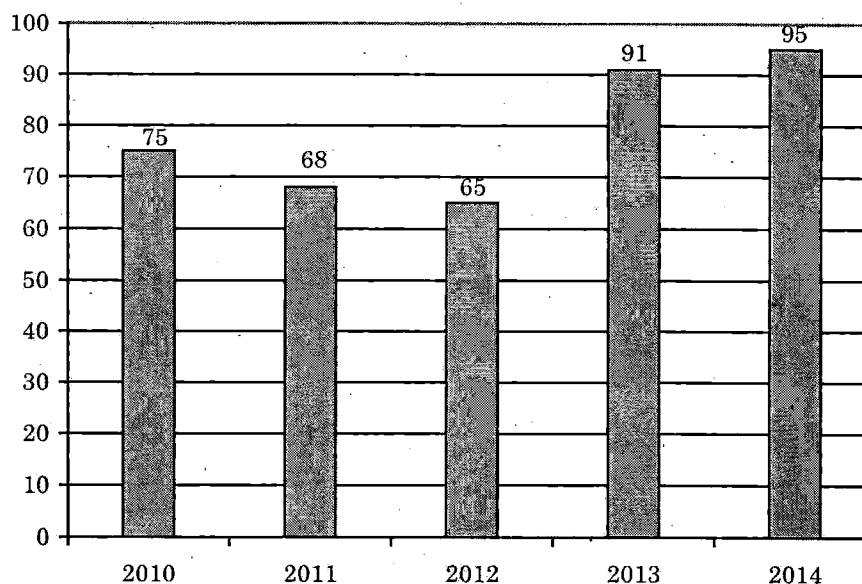
(i) Choose the correct answer for the following questions from the options given : (6 × 1 = 6)

- (1) What is the main purpose of the passage?
 - (A) To discuss the health problems caused by being overweight
 - (B) To recommend a weight-loss program for the obese
 - (C) To help overweight people overcome their eating problem
 - (D) To present research into the factors causing obesity
- (2) The author mentions people's eating habits during times of stress to show that
 - (A) overweight people are tense
 - (B) thin people don't eat when under stress
 - (C) a large percentage of people deal with stress by eating
 - (D) 56 percent of the population isn't overweight

- (3) The word 'crave' in second paragraph is closest in meaning to
(A) devour (B) absorb
(C) season (D) desire
- (4) The word 'strenuous' in the last paragraph is closest in meaning to
(A) strengthening (B) complicated
(C) defeating (D) vigorous
- (5) Which one of the following exercises might be best for an overweight person?
(A) An evening walk
(B) A long swim
(C) Cross-country skiing
(D) 10-mile bicycle rides
- (6) According to the writer, jogging is a
(A) mild exercise
(B) simple exercise
(C) strenuous exercise
(D) common exercise
- (ii) Imagine that your brother who is overweight develops several health problems. You and your parents want to take measures to reduce his weight. Prepare a checklist of **four** items that you check in terms of his diet and exercise to deal with the problems of obesity. (4)
- (b) Look at the following information and graph about pass percentage of the students in the plus two examination. Analyse the given data and write a short review of the pass percentage of the students in a paragraph of not more than 120 words: (6)

About John Higher Secondary school

- This school was started in a village to cater to the needs of the poor people.
- In 2011, many experienced teachers left the school.
- After reviewing the low performance of the students in the plus-two examination, the infrastructure facilities were improved and teachers were given adequate training to teach their subjects effectively.
- Besides, the management has started giving special incentives to the teachers who give cent percent results in the examination.



12. (a) Read the following passage and answer the questions given below:

Within fifteen years Britain and other nations should be well on with the building of huge industrial complexes for the recycling of waste. The word rubbish could lose its meaning because everything which goes into the dustbin would be made into something useful. Even the most dangerous and unpleasant wastes would provide energy if nothing else.

The new concept of recycling waste is taking shape at the British technological laboratory at Warren Spring, not far north of London. Today, the laboratory spends four times as much money in studying recycling as it did five years ago.

The latest project is to take a city of around half a million inhabitants and discover exactly what raw materials go into it and what go out. The aim is to find out how much of these raw materials could be provided if a plant for recycling waste were built just outside the city. This plant would recycle not only metal such as steel, lead and copper, but also paper and rubber as well. Methods have been discovered, for example, for removing the link from newsprint so that the paper can be used again, and for obtaining valuable oils and gases from old motor car tyres. All these ideas are already being made use of, but what is new is the idea of combining them on such a large scale in a single plant designed to recycle most types of waste.

Another new project is being set up to discover the best ways of sorting and separating the rubbish. When this project is complete, the rubbish will be processed like this: first, it will pass through sharp metal spikes which will tear open the plastic bags in which rubbish is usually packed; then it will pass through powerful fan to separate the lightest elements from the heavy solids; after that crushers and rollers will break up everything that can be broken. Finally, the rubbish will pass under magnets, which will remove the bits of iron and steel; the rubber and plastic will then be sorted out in the final stage.

The first full-scale giant recycling plants are, perhaps, fifteen years away. But in some big industrial areas, where rubbish has been dumped for so long that there are no holes left to fill up with rubbish, these new automatic recycling plants may be built sooner. Indeed, with the growing cost of transporting rubbish to more distant dumps, some big cities will be forced to build their own recycling plants.

- (i) Write a short summary of the given passage in not more than 100 words. (6)
- (ii) Answer the following questions in not more than three sentences: (5 × 2 = 10)
- (1) Why does the writer say that the word 'rubbish' will lose its meaning?
 - (2) What is the name of the laboratory for an extensive study on recycling?
 - (3) Which one is considered as the new idea in the latest project?
 - (4) List the four stages in the new project for sorting and separating the rubbish.
 - (5) Why does the writer feel that the big cities will be compelled to build their own recycling plants?

Or

- (b) Read the following passage and answer the questions given below:

Let us now consider a modern case of telepathy. A girl of about ten years of age was walking along a country lane, reading a book on geometry. Quite suddenly her surroundings seemed to fade away, and she saw her mother lying apparently dead on the floor of a little-used room at home, known as the 'white room'. Near her on the floor was a handkerchief. The child was so upset by this vision that instead of going straight home she rushed to the doctor's house and persuaded him to go home with her. They found the woman lying on the floor of the 'white room' suffering from a severe heart attack. Beside her was the handkerchief. The doctor arrived in time to save her life.

The case is a good one. The story is not one that a child of ten would be expected to invent in crisis. Moreover, it was verified that she did visit the doctor before going home. Quite possibly, however, the tale was 'helped' by the addition of details after the event. The mention of the handkerchief may have, been added later to make the story sound more impressive, or it may even have been a distortion of memory. What is most important is that the child acted on her vision and went straight to the doctor.

Quite recently in the *New York Times Magazine* a physician tried to discredit the case by suggesting that the child's mother may have been a hysteric who frequently imagined she was having heart attacks, and so there would be nothing very remarkable in the child's inventing a vision of her parent suffering from such a seizure. The suggestion does not seem very likely. Had the woman been subject to such attacks, genuine or imagined, the doctor would surely have mentioned the fact. Moreover,

later in her life the girl frequently spoke about the incident as something unique in her experience, which she would scarcely have done had the vision been a mere exercise of the imagination.

- (i) Write a short summary of the given passage in not more than 100 words. (6)
- (ii) Answer the following questions in not more than three sentences: (5 × 2 = 10)
- (1) What is 'telepathy'?
 - (2) What is the writer's point of view regarding the mention of handkerchief in this passage?
 - (3) How did the girl come to know about her mother ailing from a severe heart attack?
 - (4) What do you mean by 'white room' in this passage?
 - (5) What was the reason given by a physician in 'New York Times' magazine to discredit this case?

13. (a) Read the following advertisement published in 'The Times of India' and write a letter of application. Enclose your resume with the letter of application. (16)

Job: Software Engineer

Company: Kamal Info systems Private Limited

Location: Hyderabad

Eligibility: B.E. / B.Tech.

Skills: Capital Markets, Object Orientation Project Planning, Design Patterns in Java, C++

Send your application with the resume to: The HR Manager, Kamal Info Systems Private

Limited, No.14, Greams Road, Hyderabad —500 002

Or

- (b) Read the following advertisement uploaded in the website — <http://techssolutions.com/> and write your cover letter in the email format and the resume in the attachment file format and send them to the following email ID:techsolutions@gmail.com. (16)

Tech Solutions (P) Ltd — Chennai

Requires Software Developer

- To work as software trainee in java, c + +, dot net & lamp
- Attractive pay package

Experience: Freshers can apply

Eligibility: B.E. / B.Tech.

Location: Chennai

Send your application with the resume to the email ID:techsolutions@gmail.com

14. (a) Survey report

Chennai Metrowater proposes to set up a water supply project, partially funded by the users, for the IT companies situated along the Rajiv Gandhi Salai and East Coast Road. These companies depend on private water tankers to meet their daily needs and they expect Chennai Metrowater authorities to find a solution to this long pending problem. Imagine that you are the consultant for this project and you have been requested to submit a detailed report to The Chief Engineer, Chennai Metrowater. You have to make a survey of the demands of various types of users and their willingness to pay for the service. In your report, you can suggest the tariff for various types of users. Besides, you have to identify the deficiencies in the existing water supply system and provide suggestions to implement the project successfully. Prepare a report in not more than 300 words.

Or

(b) Project report

Imagine that you are the coordinator for the project on educational short films. In general, students show a lot of enthusiasm in seeing films. For the project, you have produced seven short films related to science and technology. Write a report in not more than 300 words about short films that you have produced for the project. (16)

15. Write a dialogue for the following situations: (16)

- (a) You wish to start Employability skills club in your college. You meet the Principal of your college to get permission for this club. Write a dialogue that happened between you and the Principal. The first exchange is given for you to start the dialogue.

Principal: Why do you want to start Employability skills club?

You: Many students in our college need employability skills and the club will conduct programmes to cater to their needs.

You should have minimum of eight exchanges (16 sentences) between you and the Principal.

Or

- (b) You are working as a Safety engineer in a firm. Last month, there were four accidents and the company experienced heavy financial loss. Write a dialogue that happened between you and the Chief engineer. The first exchange is given for you to start the dialogue.

Chief engineer: What are the major reasons for these accidents?

You: The accidents are due to low quality machines and continuous power fluctuations. You should have minimum of eight exchanges (16 sentences) between you and the Chief engineer.